

# ÜBERSICHTSZEICHNUNG

ASSEMBLY DRAWING

**GHOST**



HYB Square Cross(MY18)

2018-01-11

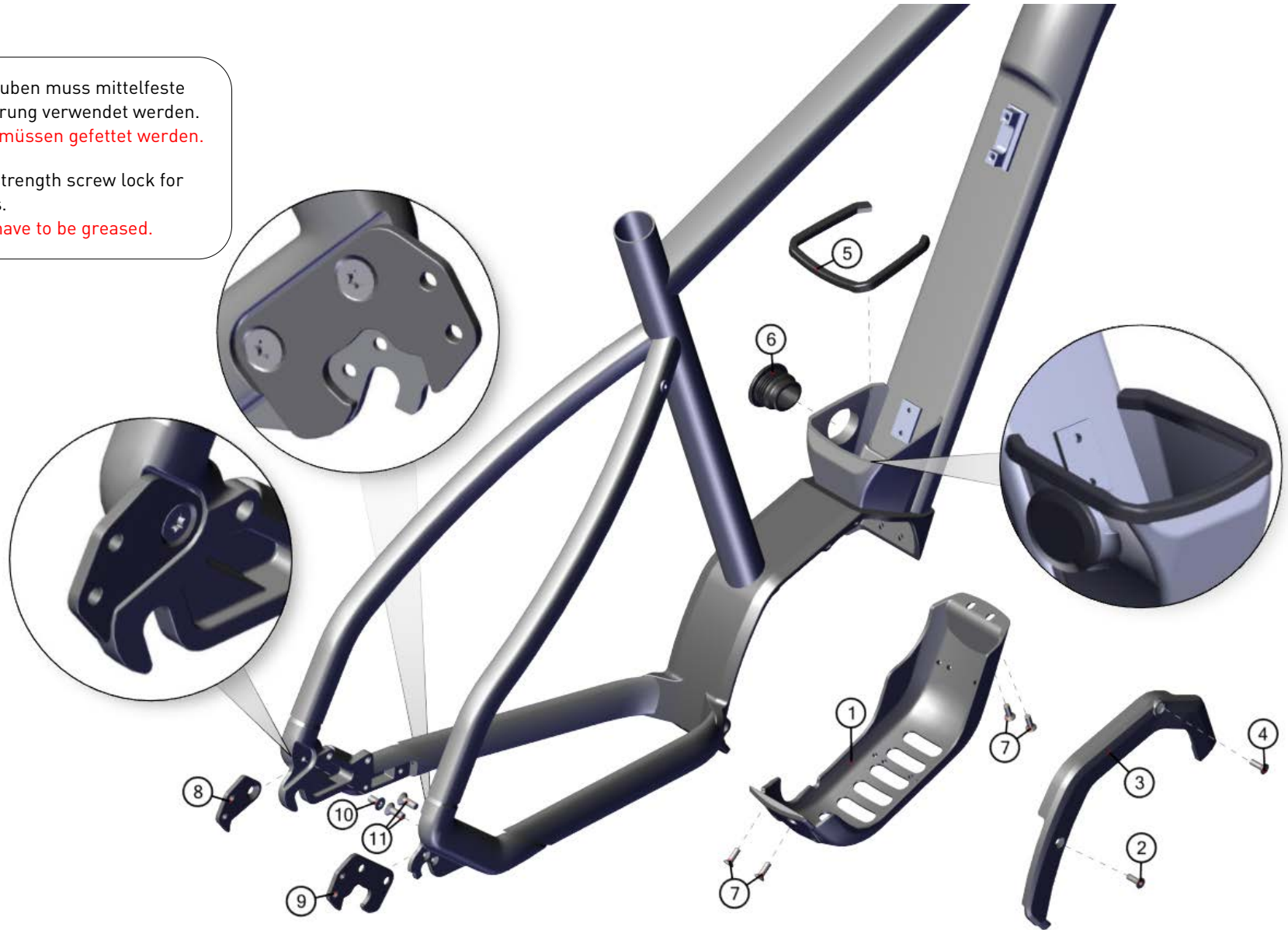
V01

# ÜBERSICHTSZEICHNUNG ASSEMBLY DRAWING

**GHOST**

**Hinweis:** Bei den Schrauben muss mittelfeste Gewindesicherung verwendet werden.  
**Rote Flächen müssen gefettet werden.**

**note:** use medium strength screw lock for screw threads.  
**red surfaces have to be greased.**



# ÜBERSICHTSZEICHNUNG

## ASSEMBLY DRAWING

**GHOST**

BOM-ID	Description	Specification	Torque	Item no.	QTY
1	Engine Cover black			FROT0033	1
2	Countersunk screw	HEX3 - M5 x 15mm	5 Nm	FRSC0012	1
3	Engine Side Cover			FROT0028	1
4	Countersunk screw	HEX3 - M5 x 20mm	5 Nm	FRSC0013	1
5	Battery Water-proof pad			FROT0012	1
6	Battery rubber plug			FROT0011	1
7	Countersunk screw	T25 - M5 x 11mm	5 Nm	SM0920	4
8	Spacer hanger drop out left			FROT0021	1
9	Spacer hanger drop out right			FROT0022	1
10	Countersunk screw	T30 - M6 x 12,7mm	8 Nm	FRSC0001	1
11	Countersunk screw	T30 - M6 x 16mm	8 Nm	FRSC0002	2